

**Exhibit L: Agency Consultation: Other Agencies**  
(21 pages)

## Leah Deveau

---

**From:** Nadiya Bogush  
**Sent:** Friday, December 11, 2009 4:57 PM  
**To:** 'info@ceaa-acee.gc.ca'  
**Subject:** Silver Creek Solar Park Project  
**Attachments:** 11122009 Silver Creek Solar Park Project Cover Letter CEAA.pdf; Notice of Proposal Silvercreek Solar Project 18112009.pdf; Draft Project Description Release Date Dec 11 2009.pdf

Dear Canadian Environmental Assessment Agency,

Attached are the Draft Project Description and the Notice of Proposal/ Public Meeting for the proposed Silver Creek Solar Park project.

Please do not hesitate to contact me if you have any questions or require any further clarifications.

Regards,

**Nadiya Bogush, B.Sc., M.E.S.**

ORTECH Environmental  
804 Southdown Road  
Mississauga, ON, L5J 2Y4  
Tel: (905) 822-4120, ext. 223  
1-877-774-6560, ext. 223  
Fax: (905) 855-0406  
[nbogush@ortech.ca](mailto:nbogush@ortech.ca)

THIS MESSAGE IS ONLY INTENDED FOR THE USE OF THE INTENDED RECIPIENT(S) AND MAY CONTAIN INFORMATION THAT IS PRIVILEGED, PROPRIETARY AND/OR CONFIDENTIAL. If you are not the intended recipient, you are hereby notified that any review, retransmission, dissemination, distribution, copying, conversion to hard copy or other use of this communication is strictly prohibited. If you are not the intended recipient and have received this message in error, please notify me by return e-mail and delete this message from your system. ORTECH Consulting Inc.

December 11, 2009

Canadian Environmental Assessment Agency  
22nd Floor, Place Bell  
160 Elgin Street  
Ottawa ON K1A 0H3

**Subject:** Silvercreek Solar Park project

Dear Canadian Environmental Assessment Agency,

Silvercreek Solar Park Inc. is proposing a 10 MW ground mounted solar facility in the Township of Malahide, Elgin County. The project is subject to the Ontario Regulation 359/09 under the Environmental Protection Act and requires a Renewable Energy Approval. The enclosed is the Project Description and the Notice of Proposal and Public Meeting for this project to assist the Canadian Environmental Assessment Agency in determining whether the project may have any federal interest.

If you have any questions, please do not hesitate to contact me or Leah Deveau at (905)-822-4120 ext. 305, 1-877-774-6560 or by e-mail [info@silvercreeksolar.com](mailto:info@silvercreeksolar.com).

Regards,



Nadiya Bogush  
ORTECH Environmental  
804 Southdown Road  
Mississauga, ON, L5J 2Y4  
Tel: (905) 822-4120, ext. 223  
1-877-774-6560, ext. 223  
Fax: (905) 855-0406  
[nbogush@ortech.ca](mailto:nbogush@ortech.ca)

cc: S. Manser, ORTECH Environmental  
L. Deveau, ORTECH Environmental



**Canadian Environmental  
Assessment Agency**

55 St-Clair Avenue East  
9th Floor, Room 907  
Toronto, Ontario  
M4T 1M2

**Agence canadienne  
d'évaluation environnementale**

55 Avenue St-Clair Est  
9ième étage, pièce 907  
Toronto, Ontario  
M4T 1M2

August 18, 2010

Nadiya Bogush  
ORTECH Environmental  
804 Southdown Road  
Mississauga, ON, L5J 2Y4

Dear Nadiya Bogush,

**Re: Silvercreek Solar Park Project, Malahide, Ontario.**

Thank you for your letter of December 11, 2009 that included a draft project description report and a notice of proposal and public meeting in relation to the above-noted project.

We understand that proposed renewable energy projects requiring a provincial Renewable Energy Approval (REA) are not subject to a provincial environmental assessment (EA) process. As a result, our office will not play a coordination role in relation to your proposed project and staff will not review the draft project description you provided. We typically act as the Federal Environmental Assessment Coordinator for project proposals that are subject to both a provincial EA and federal EA screening concurrently, or for federal EA comprehensive studies.

The requirements of the *Canadian Environmental Assessment Act* (the Act) may apply to your proposed project. The Act applies to federal authorities when they contemplate certain actions or decisions in relation to a project that would enable it to proceed in whole or in part. A federal environmental assessment (EA) may be required when a federal authority is the proponent of the project; provides financial assistance to the proponent; sells, leases or otherwise disposes of federal lands; or issues a permit, licence or any other approval as prescribed in the *Law List Regulations*.

You may wish to check with other potential federal authorities (if applicable) listed in the attachment to this letter about their potential federal EA interests or responsibilities. Please note that you may be advised to contact additional federal authorities based on the nature of your proposal and the environmental setting or may be asked for additional information about your proposal.

.../2



To better assist proponents in understanding the types of information that federal authorities may wish to receive, the Agency has developed an Operational Policy Statement, which provides guidance in preparing project descriptions. This document is available on the Agency's website at:

[http://www.ceaa-acee.gc.ca/013/0002/ops\\_ppd\\_e.htm](http://www.ceaa-acee.gc.ca/013/0002/ops_ppd_e.htm)

Information on potential federal interests for each type of renewable energy project are identified in the Ontario Ministry of the Environment Renewable Energy Approval (REA) Guide which is found at:

<http://www.ene.gov.on.ca/en/business/green-energy/proponents.php>

If you have any questions regarding this correspondence, please contact me at 416-954-7357

Sincerely,

A handwritten signature in black ink, appearing to read 'Amiel Blajchman', with a stylized flourish at the end.

Amiel Blajchman  
Project Manager  
Canadian Environmental Assessment Agency  
Ontario Region

Attachment

cc:

Petra Fisher, Ontario Renewable Energy Facilitation Office

May Lyn Trudelle, Environmental Assessment and Approvals Branch, Ontario Ministry of the Environment

**List of Potentially Responsible/Interested Federal Authorities**

<b>Federal Authority</b>	<b>Possible EA Interest</b>	<b>Possible Other Interest</b>	<b>REA Plain Language Guide Reference</b>
Correctional Services Canada	<b>X</b>		
Department of National Defence (Land Force Central Area and Defence Construction Canada)	<b>X</b>		
Environment Canada	<b>X</b>		P.44, 52, 61, 69
Fisheries and Oceans Canada	<b>X</b>		P. 43, 52, 61, 68
Health Canada	<b>X</b>		
Indian and Northern Affairs Canada	<b>X</b>		
Infrastructure Canada	<b>X</b>		
Natural Resources Canada	<b>X</b>		P. 45, 53, 62, 69
Parks Canada	<b>X</b>		P. 44, 52, 61, 69
Royal Mounted Police	<b>X</b>	<b>X</b>	P. 43
Transport Canada	<b>X</b>		P. 43, 68
Canadian Broadcasting Corporation		<b>X</b>	P. 43
National Defence (Radio Communication Systems and Air Traffic Control (ATC) Radar Systems)		<b>X</b>	

August 2, 2012

To Whom It May Concern:

ORTECH Power (ORTECH) has been retained by Silvercreek Solar Park Inc. (SSPI) to complete the Renewable Energy Approval (REA) for the Silvercreek Solar Park, a 10MW ground mounted solar PV project in the Township of Malahide. In accordance with Ontario Regulation 359/09 a Notice of Public Meeting was posted in the Aylmer Express indicating the date of the second and final public open house on October 4, 2012. As well this Notice detailed the availability of the Draft REA submission public review and comment. This review and comment period will run from **August 2, 2012 until November 5, 2012**.

In accordance with Ontario Regulation 359/09 these draft reports are being made available for review and comment from **Thursday August 2, 2012 until 4:30 pm Monday November 5 2012**. The documents may be reviewed on the project website: [www.silvercreeksolar.com](http://www.silvercreeksolar.com). Two hard copies and two electronic copies of these documents may be found during this review period at the following public location:

<p><b>The Elgin County Library Aylmer Branch</b> 38 John St. S. Aylmer, ON</p>
--

In accordance with O.Reg 359/09, stakeholders are invited to submit comments and questions on the draft reports directly to Silvercreek Solar Park Inc. at the address below:

**Silvercreek Solar Park Inc. c/o**  
Leah Deveau  
ORTECH Power  
804 Southdown Rd. Mississauga ON; L5J 2Y4  
Phone: 1-877-774-6560 x.305  
Fax: 905-855-0406  
Email: [info@silvercreeksolar.com](mailto:info@silvercreeksolar.com)

Following the conclusion of this comment period on Monday November 5, 2012 Silvercreek Solar Park will evaluate all comments received and prepare its final REA submission for the Ministry of the Environment.

We appreciate your input into this process and look forward to your continued input in the future.

Thanks kindly,

Leah Deveau, BES  
**ORTECH Power**  
[www.silvercreeksolarpark.com](http://www.silvercreeksolarpark.com)

*-enclosures*

**c.c.** Dave Moerman, Silvercreek Solar Park Inc.



Canadian Environmental  
Assessment Agency

Agence canadienne  
d'évaluation environnementale

55 St. Clair Avenue East  
Suite 907  
Toronto, Ontario  
M4T 1M2

55, avenue St-Clair Est  
Bureau 907  
Toronto (Ontario)  
M4T 1M2

August 10, 2012

Silvercreek Solar Park Inc. c/o  
Leah Deveaux  
ORTECH Power  
804 Southdown Rd.  
Mississauga ON L5J 2Y4

Dear Ms.Deveaux:

**RE: Renewable Energy Approval for the Silvercreek Solar Park**

Thank you for your letter of August 2, 2012, related to the above-noted project.

As part of the Government's plan for Responsible Resource Development which seeks to modernize the regulatory system for project reviews, the former *Canadian Environmental Assessment Act* was repealed when the new *Canadian Environmental Assessment Act, 2012 (CEAA 2012)* came into force on July 6, 2012.

The CEAA 2012 applies to projects listed in the *Regulations Designating Physical Activities*. Under CEAA 2012, the proponent must provide the Canadian Environmental Assessment Agency (the Agency) with a description of their proposed project if it is captured under the above-noted regulations.

.../2





For more information about CEAA 2012, please access the following links  
<http://www.ceaa.gc.ca/default.asp?lang=En&n=16254939-1> and  
<http://www.ceaa.gc.ca/default.asp?lang=En&n=9EC7CAD2-1>. You may also find  
the Guide to Preparing a Description of a Designated Project and the *Prescribed  
Information for a Description of a Designated Project Regulations* on the Agency  
website.

If it appears that CEAA 2012 applies to your proposed project or if you have  
questions, please contact the undersigned at 416-952-5016.

Sincerely,

A handwritten signature in black ink, consisting of several fluid, overlapping strokes that form a cursive-style name.

Amiel Blajchman, Project Manager  
Canadian Environmental Assessment Agency, Ontario Region

AB/jr



**ORTECH**  
**Environmental**  
a division of ORTECH Consulting Inc.

December 10, 2009

Ministry of Transportation  
1201 Wilson Avenue  
Building D, 2nd Floor  
Downsview, Ontario  
M3M 1J8

Attn: Michael DeMichele

**Subject:** Notice of Proposal and Public Meeting for Silvercreek Solar Park project

Dear Michael,

Silvercreek Solar Park Inc. (the Proponent) is proposing to build a new 10 MW ground mounted solar photovoltaic facility on privately owned lands in the Township of Malahide, Elgin County. The project is in the very early stages of development and the Proponent would like to ensure that your organization was made aware of the project. Enclosed is the Notice of Proposal and Public Meeting for this project as required by section 15 of the Ontario Regulation 359/09 under the Environmental Protection Act.

If you have any questions, please do not hesitate to contact me or Leah Deveau at (905)-822-4120 ext. 305 or 1-877-774-6560 or by e-mail [info@silvercreeksolar.com](mailto:info@silvercreeksolar.com).

Regards,

**Nadiya Bogush, B.Sc., M.E.S.**  
ORTECH Environmental  
804 Southdown Road  
Mississauga, ON, L5J 2Y4  
Tel: (905) 822-4120, ext. 223  
1-877-774-6560, ext. 223  
Fax: (905) 855-0406  
[nbogush@ortech.ca](mailto:nbogush@ortech.ca)

## Leah Deveau

---

**From:** Nadiya Bogush  
**Sent:** Tuesday, December 15, 2009 5:39 PM  
**To:** michael.demichele@ontario.ca  
**Subject:** Silvercreek Solar Park Project Open House Invitation  
**Attachments:** 15122009 Silvercreek Solar Park Project Open House Invitation.pdf

Dear Michael,

Please find attached an invitation for the Silvercreek Solar Park Project Open House scheduled for Friday, December 18, 2009.

Please feel free to contact me or Leah Deveau if you have any questions regarding this meeting or require further information about the project.

Regards,

**Nadiya Bogush, B.Sc., M.E.S.**

ORTECH Environmental  
804 Southdown Road  
Mississauga, ON, L5J 2Y4  
Tel: (905) 822-4120, ext. 223  
1-877-774-6560, ext. 223  
Fax: (905) 855-0406  
[nbogush@ortech.ca](mailto:nbogush@ortech.ca)

THIS MESSAGE IS ONLY INTENDED FOR THE USE OF THE INTENDED RECIPIENT(S) AND MAY CONTAIN INFORMATION THAT IS PRIVILEGED, PROPRIETARY AND/OR CONFIDENTIAL. If you are not the intended recipient, you are hereby notified that any review, retransmission, dissemination, distribution, copying, conversion to hard copy or other use of this communication is strictly prohibited. If you are not the intended recipient and have received this message in error, please notify me by return e-mail and delete this message from your system. ORTECH Consulting Inc.



**ORTECH**  
**Environmental**  
a division of ORTECH Consulting Inc.

December 15, 2009

Michael DeMichele  
Ministry of Transportation  
1201 Wilson Avenue  
Building D, 2nd Floor  
Downsview, Ontario  
M3M 1J8

**Subject:** Silvercreek Solar Park Project Open House

Dear Michael,

ORTECH Environmental is pleased to invite you on behalf of the Proponent (Silvercreek Solar Park Inc.) for the Silvercreek Solar Park Project Open House, which will be held on Friday, December 18, 2009 from 4 PM to 8 PM at the German Canadian Club located at 522 Talbot St. W. in the Town of Aylmer.

If you have any questions about this meeting, please do not hesitate to contact me or Leah Deveaux at (905) 822-4120 or 1-877-774-6560, Ext. 305.

Regards,

**Nadiya Bogush, B.Sc., M.E.S.**

ORTECH Environmental  
804 Southdown Road  
Mississauga, ON, L5J 2Y4  
Tel: (905) 822-4120, ext. 223  
1-877-774-6560, ext. 223  
Fax: (905) 855-0406  
nbogush@ortech.ca

cc: S. Manser, ORTECH Environmental  
L. Deveaux, ORTECH Environmental

## Leah Deveau

---

**From:** Nadiya Bogush  
**Sent:** Wednesday, December 16, 2009 5:20 PM  
**To:** 'Steven.McInnis@ontario.ca'  
**Subject:** Silvercreek Solar Park project Notice of Proposal/ Public Meeting and Open House  
**Attachments:** 16122009 Cover Letter MTO.pdf; Notice of Proposal\_Public Meeting Silvercreek Solar Project 18112009.pdf

Hello Steven,

We would like to inform your office about the proposed Silvercreek Solar Park project located in the Township of Malahide, Elgin County.

Please find attached the Notice of Proposal/ Public Meeting for this project and invitation for the Open House scheduled for Friday, December 18, 2009.

If you have any questions regarding this project or require further information, please do not hesitate to contact me.

Regards,

**Nadiya Bogush, B.Sc., M.E.S.**

ORTECH Environmental  
804 Southdown Road  
Mississauga, ON, L5J 2Y4  
Tel: (905) 822-4120, ext. 223  
1-877-774-6560, ext. 223  
Fax: (905) 855-0406  
[nbogush@ortech.ca](mailto:nbogush@ortech.ca)

THIS MESSAGE IS ONLY INTENDED FOR THE USE OF THE INTENDED RECIPIENT(S) AND MAY CONTAIN INFORMATION THAT IS PRIVILEGED, PROPRIETARY AND/OR CONFIDENTIAL. If you are not the intended recipient, you are hereby notified that any review, retransmission, dissemination, distribution, copying, conversion to hard copy or other use of this communication is strictly prohibited. If you are not the intended recipient and have received this message in error, please notify me by return e-mail and delete this message from your system. ORTECH Consulting Inc.

December 16, 2009

Steven McInnis  
Head – Corridor Management  
Ministry of Transportation  
Exeter Road Complex  
659 Exeter Rd  
London, Ontario  
N6E 5L3

**Subject:** Silvercreek Solar Park Project

Dear Steven,

ORTECH Environmental is pleased to invite your office on behalf of the Proponent (the Silvercreek Solar Park Inc.) for the Silvercreek Solar Park Project Open House, which will be held on Friday, December 18, 2009 from 4 PM to 8 PM at the German Canadian Club located at 522 Talbot St. W. in the Town of Aylmer.

Silvercreek Solar Park Inc. (the Proponent) is proposing to build a new 10 MW ground mounted solar photovoltaic facility on privately owned lands in the Township of Malahide, Elgin County. The project is in the very early stages of development and the Proponent would like to ensure that your organization was made aware of the project. Enclosed is the Notice of Proposal and Public Meeting for this project as required by section 15 of the Ontario Regulation 359/09 under the Environmental Protection Act which was mailed on December 10, 2009 to the Ministry of Transportation, Central Region office.

If you have any questions or require further information about the project, please do not hesitate to contact me or Leah Deveau at (905)-822-4120 ext. 305 or 1-877-774-6560 or by e-mail [info@silvercreeksolar.com](mailto:info@silvercreeksolar.com).

Regards,



**Nadiya Bogush, B.Sc., M.E.S.**  
Tel: (905) 822-4120, ext. 223  
[nbogush@ortech.ca](mailto:nbogush@ortech.ca)

## Leah Deveaux

---

**From:** Morrisey, John (MTO) <John.Morrisey@ontario.ca>  
**Sent:** Thursday, December 17, 2009 9:59 AM  
**To:** Nadiya Bogush  
**Cc:** McInnis, Steve (MTO); Burns, Tim (MTO)  
**Subject:** Silvercreek Solar Park project Notice of Proposal

To: Nadiya Bogush, B.Sc., M.E.S.  
ORTECH Environmental  
804 Southdown Road  
Mississauga, ON, L5J 2Y4

Re: Silvercreek Solar Park project Notice of Proposal/ Public Meeting and Open House

The Ministry of Transportation (MTO) has reviewed the above-noted notice of proposal in accordance with the Public Transportation and Highways Improvement Act (*PTHIA*). The subject property is well outside the MTO permit control area, and therefore MTO approvals for the ground mounted solar photovoltaic facility will not be required. The notice also describes a 4.5 km transmission line to connect to the Dunboyne Distribution Station. Although the proposed line falls beyond the MTO permit control area, please be advised that should a new line need to cross a provincial highway, ministry approval shall be required prior to its construction.

Should you need to discuss further, please do not hesitate to call.

Regards,

John Morrisey  
Corridor Management Planner  
Corridor Management Section  
West Region  
Phone 519-873-4597  
Fax 519-873-4600  
email [john.morrisey@ontario.ca](mailto:john.morrisey@ontario.ca)

August 3, 2012

John Morrissey  
Planner- Corridor Management  
Ministry of Transportation  
Exeter Road Complex  
659 Exeter Rd.  
London, ON N6E 5L3

**Re: Silvercreek Solar Park – Notice Of Open House & Draft REA Documents**

Mr. Morrissey,

In follow up to correspondence in 2009 Silvercreek Solar Park Inc. wishes to notify you of the Notice of Open House and Draft Renewable Energy Approval Documents available for a 10 MW ground mounted solar park located in Malahide Township Ontario. In 2009 it was determined this project was located outside the MTO control area, however since that time some changes to the project footprint have occurred and a connection line is now planned to cross beneath Talbot Line (installed via directional drilling). I have included for your reference two maps of this crossing, as well as a CD which contains all the draft REA documents for your review.

We look forward to discussing the details of this proposed crossing in a conference call sometime in the near future. Please do not hesitate to contact me if you have any questions regarding this submission at 905-822-4120 x.305 or [ldeveaux@ortech.ca](mailto:ldeveaux@ortech.ca)

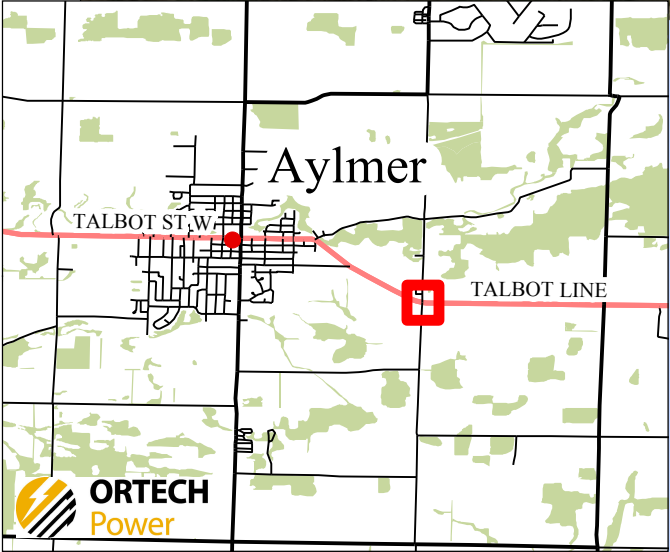
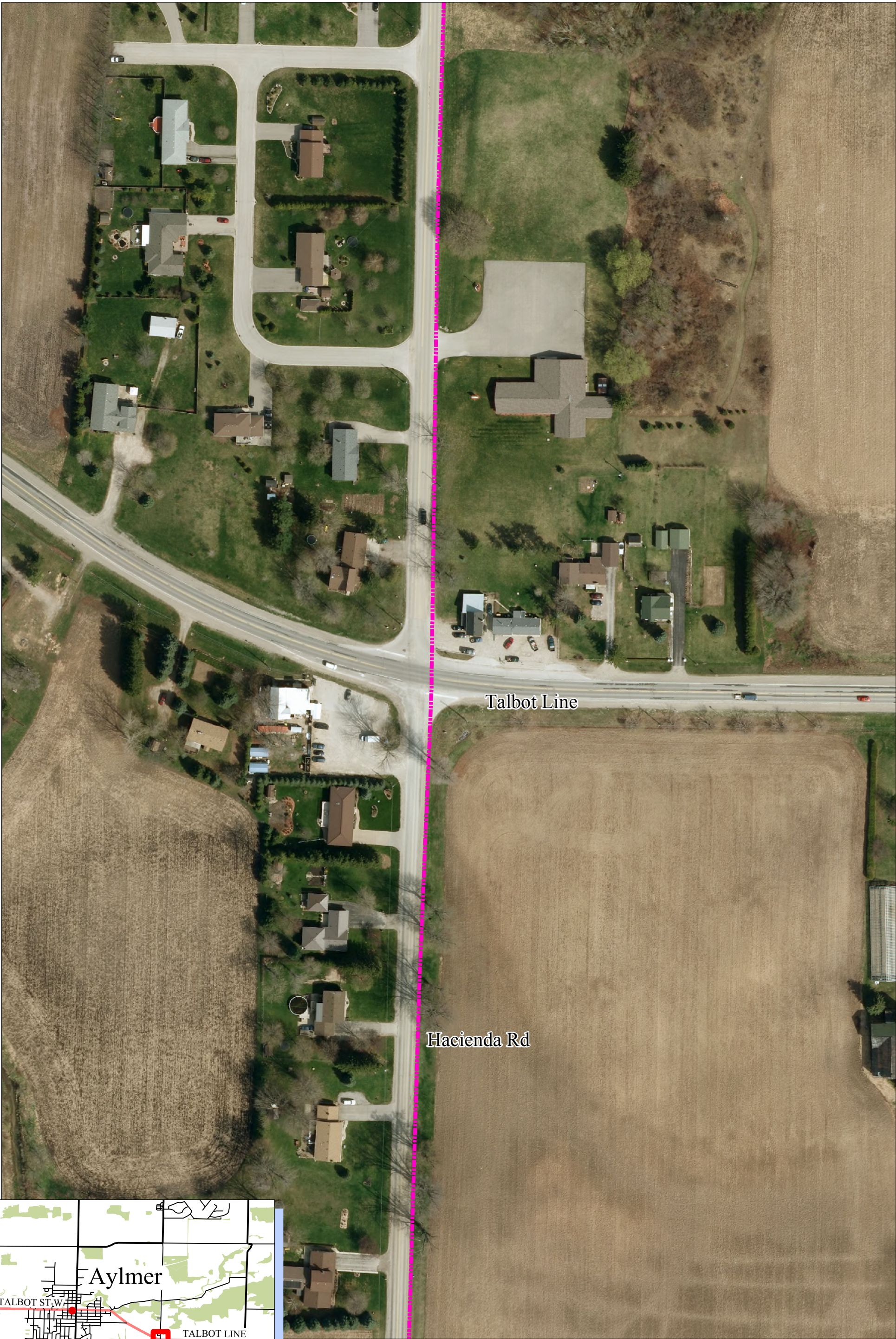
Regards,

Leah Deveau, BES  
ORTECH Power

-enclosures

cc: Dave Moerman,





UTM NAD 83 Zone 17 Data Courtesy of MNR, LIO - Aug,03/2012

## Talbot Line

- 34.5kV Underground Cable
- Rail



0 12.5 25 50 Meters



## Leah Deveaux

---

**From:** Mentley, Ryan (MTO) <Ryan.Mentley@ontario.ca>  
**Sent:** Wednesday, August 22, 2012 3:37 PM  
**To:** Leah Deveaux  
**Cc:** Boldt, Andy (MTO)  
**Subject:** Notice of Study Commencement - Silvercreek Solar Park - Encroachment Permit Application Process and Requirements  
**Attachments:** EA - Letter.pdf  
  
**Follow Up Flag:** Follow up  
**Flag Status:** Flagged

Leah,

I received a **Notice of Study Commencement** for the **Silvercreek Solar Park** in Malahide Township and have prepared and attached a letter with the Ministry of Transportation's response. The letter details that all work within the ministry right-of-way will require an encroachment permit and that all proponents should contact the ministry to discuss requirements and conditions well in advance of the proposed work to ensure that all ministry requirements are met.

Please see the link below for the encroachment permit application form and requirements.

<http://www.mto.gov.on.ca/english/engineering/management/corridor/encroach.shtml>

You may send in the form electronically once completed, however it must be signed in order for us to process it (ie. fill out, print, sign, scan, send), I have also attached a credit card payment form that you may use for payment of the permit fee of \$450.00, should you wish to submit everything electronically; again, this would have to be filled out, signed, scanned and sent. The 'Authorization' fill-in on the credit card form is for us to fill in once we receive it so don't worry about that line. Otherwise we would require a cheque along with the application form and drawings sent to;

Attn: Ryan Mentley  
Ministry of Transportation  
Contracts and Operations Office  
659 Exeter Road – 2<sup>nd</sup> Floor  
London, Ontario  
N6E 1L3

If you choose to submit electronically, please send the completed forms to myself at [Ryan.Mentley@ontario.ca](mailto:Ryan.Mentley@ontario.ca).

If you have any further questions or concerns, please feel free to contact me.

Thanks,

Ryan Mentley  
Technical Services Officer  
Operations Office  
MTO - West Region  
(519) 873-4114  
(519) 281-8753 (C)  
(519) 873-4734 (F)  
[ryan.mentley@ontario.ca](mailto:ryan.mentley@ontario.ca)

**Ministry of  
Transportation**

Operations Office  
West Region

659 Exeter Road  
London, Ontario N6E 1L3  
Telephone: (519) 873-4372  
Facsimile: (519) 873-4734

**Ministère des  
Transports**

Bureau d'Operations  
Région de l'Ouest

659, chemin Exeter  
London (Ontario) N6E 1L3  
Téléphone: (519) 873-4372  
Télécopieur: (519) 873-4734



Silvercreek Solar Park Inc.  
804 Southdown Rd.  
Mississauga ON  
L5J 2Y4

August 22, 2012

Dear: Leah Deveau

**Re: Notice of Study Commencement – Silvercreek Solar Park**

The Ministry of Transportation (ministry) controls all encroachments within the provincial highway right-of-way, this includes any installation or other work upon, over or under, or within these limits.

The ministry's control of encroachments is intended to maximize highway safety, maintain the free flow of traffic and minimize the likelihood that an encroachment may interfere with any highway maintenance operations or future reconstruction or expansion of the highway corridor.

All work within the provincial highway right-of-way shall be subject to the approval of the ministry. The approval of encroachments is controlled by issuance of a permit by the ministry under the authority of the *Public Transportation and Highway Act* (section 31). An encroachment permit or any other permit or any approval required by the ministry shall be obtained for each encroachment before any work commences. The following link details the encroachment permit application process:

<http://www.mto.gov.on.ca/english/engineering/management/corridor/encroach.shtml>

The ministry encourages proponents to contact us during the planning process to discuss specific details of the proposed works, the required permits and the application process.

If you have any questions or require further assistance with the application process, please contact the undersigned.

Yours truly,

A handwritten signature in black ink, appearing to read "R. Mentley".

Ryan Mentley  
Technical Services Officer  
Operations Office  
West Region



**ORTECH**  
**Power**

a division of ORTECH Consulting Inc.

**www.ortech.ca**

804 Southdown Road  
Mississauga, ON  
Canada L5J 2Y4

Tel 905-822-4120  
877-774-6560  
Fax 905-855-0406

September 17, 2012

Trillium Railway  
Aaron White  
Administration Officer  
265 King St. P.O Box 218  
Port Colborne, ON L3K 5V8

**Subject** Draft REA Documents– Silvercreek Solar Park

Dear Mr. White

Silvercreek Solar Park Inc. is proposing to develop a 10MW ground mounted solar facility on private land in Malahide Township. This project is subject to the Ontario Renewable Energy Approvals process. At this time the Proponent, Silvercreek Solar Park Inc, has completed a Draft Renewable Energy document and has begun their 60 day public review process.

This project includes a 34.5 kV underground connection line which proposes to cross the St. Thomas & Eastern Spur. I have included in this package one CD copy of all the project documents as well as one hard copy map of the cable routing.

If you have any questions, please do not hesitate to contact me at [ldeveaux@ortech.ca](mailto:ldeveaux@ortech.ca) or (905) 822-4120 x. 305

Regards,

Leah Deveaux, BES  
ORTECH Power

-enclosures

cc: Dave Moerman, Silvercreek Solar Park Inc.

## Leah Deveau

---

**From:** Leah Deveau <LDeveau@ortech.ca>  
**Sent:** Wednesday, September 19, 2012 3:46 PM  
**To:** Aaron White; info@silvercreeksolar.com  
**Subject:** RE: Silver Creek Solar - Potential Underground Wire Crossing on Trillium Railway

Aaron,  
Thanks very much for your prompt reply. We will keep you updated as the process progresses.

**Leah Deveau, BES**  
EA Specialist  
Tel: (905) 822-4120 ext. 305  
[www.ortech.ca](http://www.ortech.ca)



Please consider the environment before printing this email.

THIS MESSAGE IS ONLY INTENDED FOR THE USE OF THE INTENDED RECIPIENT(S) AND MAY CONTAIN INFORMATION THAT IS PRIVILEGED, PROPRIETARY AND/OR CONFIDENTIAL. If you are not the intended recipient, you are hereby notified that any review, retransmission, dissemination, distribution, copying, conversion to hard copy or other use of this communication is strictly prohibited. If you are not the intended recipient and have received this message in error, please notify me by return e-mail and delete this message from your system. ORTECH Consulting Inc.

---

**From:** Aaron White [<mailto:aaron.white@trilliumrailway.com>]  
**Sent:** Wednesday, September 19, 2012 8:47 AM  
**To:** [info@silvercreeksolar.com](mailto:info@silvercreeksolar.com)  
**Subject:** Silver Creek Solar - Potential Underground Wire Crossing on Trillium Railway

Good Morning Leah,

I've received your package concerning the proposed Silver Creek Solar project which will involve an underground wire crossing of Trillium Railway's St. Thomas and Eastern Spur.

Trillium is not opposed to a wire crossing at the proposed location. I have not researched whether there are any existing crossings at this point which would require working around, but when the time comes, Silvercreek will be required to enter into a wire crossing agreement with Trillium and provide detailed drawings and data on the proposed crossing. There is a guide to our process on our website ([www.trilliumrailway.com](http://www.trilliumrailway.com)) under the tab "Public Issues -> Working on Trillium Property" that also explains the costs involved.

If you need any other information, please let me know.

Have a good day,

Aaron White  
Administration Officer  
Trillium Railway Co. Ltd.  
P.O. Box 218  
265 King Street  
Port Colborne, ON  
L3K 5V8  
P: 905-835-2772  
F: 905-835-8943



# St. Thomas and Eastern Railway

